

> next



Buildings may be created to last, but little else stands still in the world of architecture. Here we look at the biggest and the best projects that are taking shape, creating a buzz and inspiring awe around the globe. You could say they're floorplans for the future.

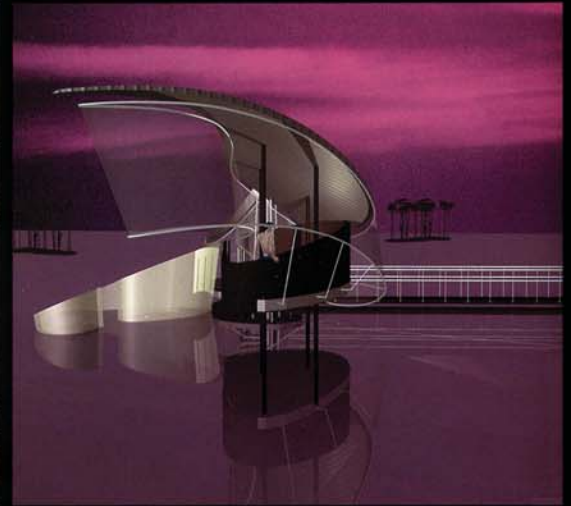
> next

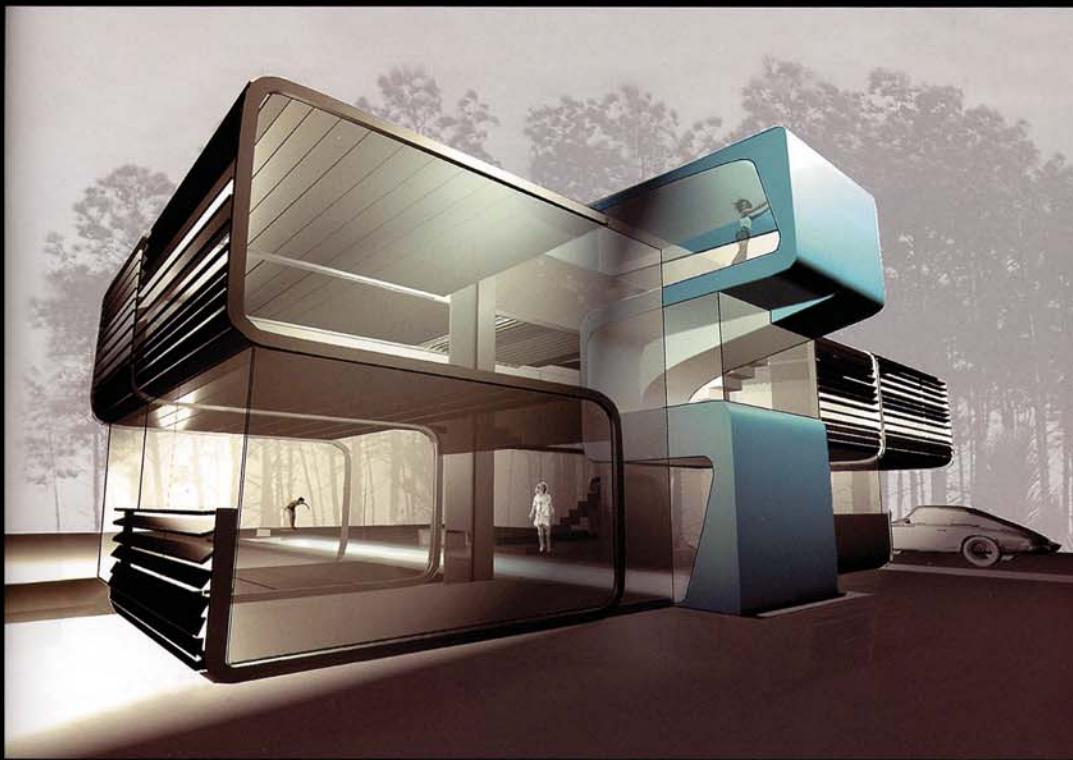


ABOVE Lindy Roy of ROY, New York. Her work is on show at SFMoMA until September 27. Titled *ROY/design series 1*, it is Roy's first solo museum show, featuring six projects through renderings, models and digital presentations.

THIS PAGE TOP Wind River Lodge with helipads, Alaska, centre for extreme skiing, rafting and fishing. The Roy website www.roydesign.com features an amazing computer generated fly-through of this project.

RIGHT Vitra Ninth Avenue, New York. A three-storey space in Manhattan for the famous furniture company, containing a showroom, shop and gallery. FAR RIGHT Okavango Delta Spa, Botswana. Built on a floodplain reached only by air, the spa sits in shallow water. Seven guest pods with thatched roofs are placed amidst papyrus beds, with wood and fibreglass tracks linking them with three termite-mound islands.





TOP LEFT Okavango Delta Spa, Botswana. Each guest pod has a floating fibreglass spa tethered to it. Four mobile 'meditation pavilions' and a crocodile-resistant lap pool—a steel frame lined with steel mesh—allows guests to swim in filtered Delta waters. There is also a bentwood deck for sunbathing.

TOP RIGHT Vitra, New York. Opened in November 2002, this is the US flagship store for the style-leading Swiss design company, displaying and selling works from such famous designers as Jean Prouve and the Eames Brothers. LEFT The Poolhouse, the Sagaponac Project, New York State. This project involves 34 houses in New York's playground, the Hamptons, designed by top architects as a counterpoint to the ubiquitous McMansion syndrome. Roy's three-storey house flows inside and out, with the swimming pool partly inside. Large glass doors pivot open to the garden.

LINDY ROY

ARCHITECTS Roy Design, New York. South African by birth, Roy studied at Columbia University and then worked with architect Peter Eisenman. She founded her own studio in 1998. SFMoMA's introduction to her current exhibition describes her as "among the leading voices in a new generation of digitally literate architects".